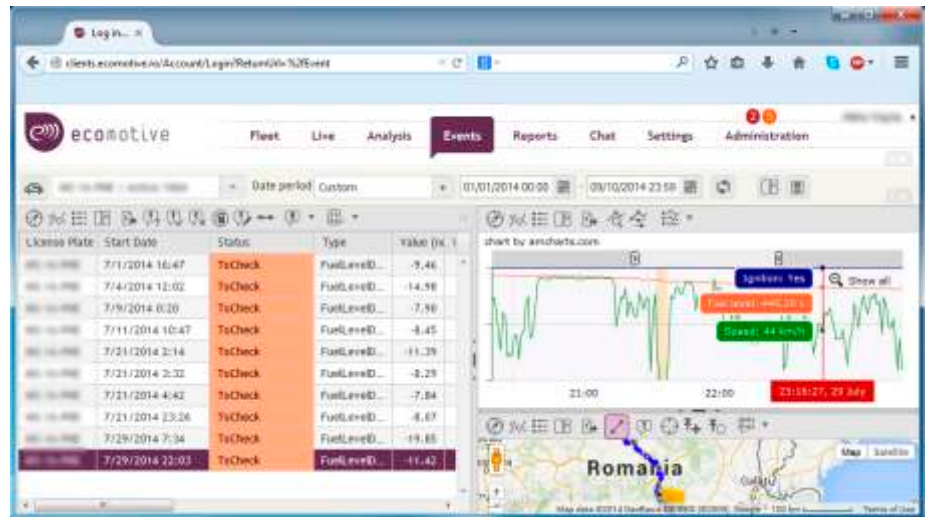


EcoMotive AVL

Terminal equipment for navigation and data collection



Ecomotive AVL devices are terminal equipment for navigation and data collection that transfer the collected data to the server using the GSM network. They are well suited for asset tracking and real-time vehicle location. The data includes the location, speed, battery level, fuel level and various others. The equipment has several inputs and outputs usable for various purposes: fuel level monitoring, driver identification, temperature, communication via Bluetooth and many others.



TOP features

- 1 Monitor your fuel level on the fly
- 2 Automated refuel and high level drop detection
- 3 Robust design with IP68 compliance
- 4 Easy and cost-effective messaging
- 5 Messaging history
- 6 Unattended temperature increase recording
- 7 Live monitoring of goods temperature data
- 8 Easy vehicle sharing between cost centers

This system will help you To:

Improve

- Consumption
- Temperature monitoring and registration
- Communication cost
- Cost control for multi-driver vehicles

Reduce

- Fuel frauds
- Deteriorated goods
- Phone bill
- Cost reporting



AVL Accessories

DieselMeter is a continuous level measurement device based on the capacitive sensor principle. This device is ideal for monitoring the fuel level of reservoirs on any vehicle.

The DieselMeter can be used for up to three reservoirs – two connected and one independent or three independent. These sensors are equipped with a very robust RS485 interface capable to tolerate all kind of misconnections on all of its pins. Each sensor is individually calibrated to offer excellent stability over temperature variations.

The **DrVID** is an identification device; it can be used to identify the driver by a personalized card or any other RFID-based tags. This data allows the tracks and working hours to be assigned to cost centers.

The **temperature sensor** is an accurate yet simple digital temperature sensor for monitoring any temperature in the -20 to +70 °C range.

The **Bluetooth communicator** is an optional extension extremely useful for messaging and communication between driver and fleet manager. The driver can use any android based smartphone and/or tablet as the input device.

The **TankCap** device detects each time the fuel tank has been opened, allowing easier identification of unauthorised fuel extraction.

